

ORKNEY

AUXILIARY OUTBOARD BRACKET FITTING TEMPLATE

Coastliner 14 mkl & II, 440, Strikeline 16, 520, Longliner 16 mkII, Day Angler 19, 590, Day Angler 21, Pilot House 20, 452, 522, Vanguard 170, 592, Fastliner 19 mkII, Vanguard 190.

This bracket is suitable for Max engine size 6hp and/or 25kg

FITTING NOTE:

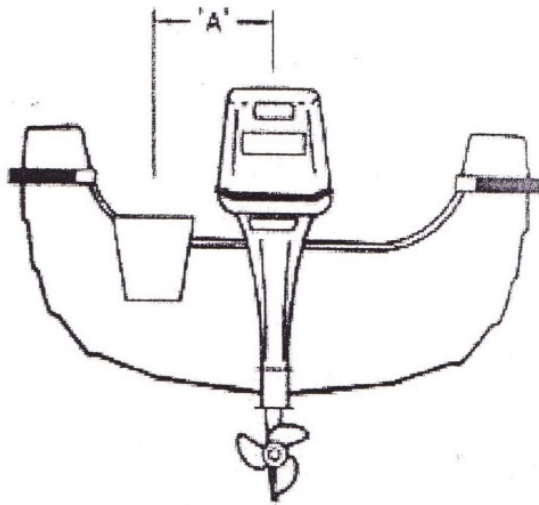
Always check fastenings are accessible prior to drilling holes.

All fastenings should be Marine grade 316 Stainless and secured with a washer or backing plate and locking nut and properly sealed with a marine grade silicone sealant (not supplied).

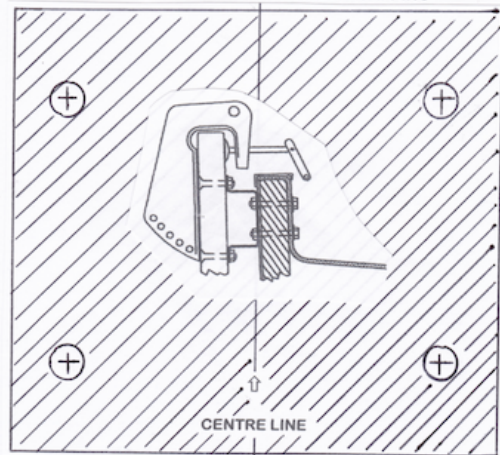
Access into buoyancy tanks can be gained by fitting an access hatch or by removing the 'witches hat' steering cable grommet.

Height of Stainless bracket should be just beneath transom capping.

Take care to ensure that bracket position enables sufficient clearance for main engine to turn from side to side 'lock to lock' this should be possible with auxiliary engine in fully tilted and stowed position.



.....TRANSOM CAPPING.....



NOT TO SCALE

Orkney Model	Measurement 'A'	
Coastliner 14 mkl & II & 440	16 inches	406mm
Strikeline 16 / 520 / Longliner 16 mkII	15.5 inches	393 mm
Day Angler 19 / 590	17.5 inches	445 mm
Day Angler 21	23.5 inches	660 mm
Pilot House 20	20.5 inches	520 mm
452	15.5 inches	393 mm
522 / Vanguard 170	17.3 inches	440 mm
592 / Vanguard 190 / Fastliner 19 mkII	18.3 inches	465 mm